

**ALL-STEEL  
RADIAL**

# **GALAXY HIPPO PUSHING TRACTION TO A WHOLE NEW LEVEL**

- Deep, variable-angle lug for added stability and top performance in mud, vegetation and pavement
- Aggressive, buttressed shoulders that add extra grab
- New, improved cut-and-chip-resistant compound with excellent wear resistance on pavement
- Steel radial belts provide puncture protection and create a larger, flatter footprint to boost traction, flotation and tire life



**GALAXY**  
APPLICATION SPECIFIC, PURPOSE BUILT.

# GALAXY HIPPO RADIAL THE NEW FARM LOADER RADIAL

The new Galaxy Hippo all-steel radial from Yokohama Off-Highway Tires America, Inc., pushes traction to a whole new level for bucket loaders on farms and dairies. It features a deep, variable-angle lug for added stability and top performance in mud, vegetation and pavement.

## VARIABLE-ANGLE LUG

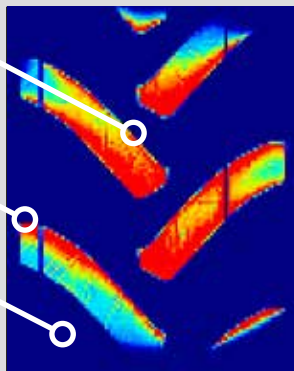
These pressure plate readouts compare the footprints of the new Hippo all-steel radial (left) with the bias-ply Hippo. Even under higher inflation pressure, the Hippo all-steel radial has a larger footprint and distributes its load all the way out to the lug shoulders. (Compare that to the concentration of high-pressure red in the center of the bias-ply lugs.) The Hippo radial lugs are also extended and feature a greater overlap in the center for better roading.

Bigger overlap for better roading

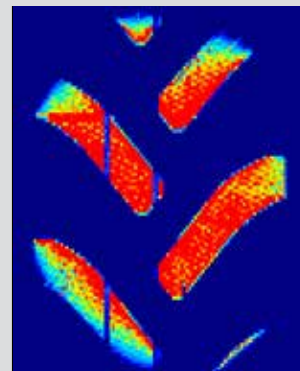
Lug contact all the way to the shoulder

6% larger footprint

HIPPO RADIAL



HIPPO BIAS



## GALAXY HIPPO - ALL-STEEL RADIAL

The new Galaxy Hippo all-steel radial features a deep, variable-angle lug for added stability and top performance in mud, vegetation and pavement. The lugs on the Hippo radial are thicker than those on the bias-ply Hippo, adding durability and roadability.



PRODUCT CODE	SIZE	ALT. SIZE	PR/LI	PLY/*	TYPE	TREAD DEPTH (in)	PREFERRED RIM	OD (in)	WIDTH (in)	RC (in)	SLR (in)	MAX LOAD (LBS)	PSI	MAX SPEED (mph)
266002-36	525/80R25	20.5R25	186 A2	*	TL	57.7	17.0/2.0-25	58.8	20.7	176.3	25.9	24000	73	25
266001-36	605/80R25	23.5R25	195A2	*	TL	61.0	19.5/2.5-25	63.6	23.8	189.1	27.8	30900	73	25

VISIT [YOKOHAMA-OHT.COM](http://YOKOHAMA-OHT.COM) FOR DETAILED LOAD AND PRESSURE TABLES

Distributor:

Yokohama Off-Highway Tires (YOHT) is a division of The Yokohama Rubber Co., specializing in Agriculture, Forestry, Construction, Industrial, Material Handling, Earthmoving, Mining, Port and other commercial tires. YOHT sells its diverse product range, consisting of over 4,000 SKUs, in over 120 countries through its subsidiaries and channel partners. YOHT products are engineered to be application-specific and purpose-built. For more information visit [www.yokohama-oht.com](http://www.yokohama-oht.com) or email us at [info@yokohama-oht.com](mailto:info@yokohama-oht.com).



Contact Yokohama Off-Highway Tires America, Inc. at (800) 343-3276 or (339) 900-8080 for your nearest Yokohama OHT Tire Dealer.

[facebook.com/yokohamaohta](https://facebook.com/yokohamaohta)

[@yokohamaohta](https://twitter.com/yokohamaohta)

[yohta-blog.yokohama-oht.com](http://yohta-blog.yokohama-oht.com)

[yokohama-oht.com](http://yokohama-oht.com)